

Working With the GCVCA Color Palettes:

A Supplement to the Cluster Handbook and Replacement for the Yellow Color Palette Guide

September 2016

Effective June 1, 2004, this booklet replaced the Yellow Color Palette Guide in use since the current color palette was adopted by the Cluster and approved by Reston Association in 2000.

This booklet contains the rules that govern the use of exterior paint colors for the wood trim, doors and windows, storm doors and windows and gutters, as revised and approved by the Reston Association Design Review Board in September 2003, May 2004 and September 2005.

The exterior paint color palettes are available for viewing on the cluster website: www.golfcourseview.org at the Handbook and Standards tab. Note that the color palettes will not print out true colors. Paint chips you can take to a paint dealer or use to select replacement windows, doors or gutters are available from the cluster board of directors.

This booklet does not address the standards that apply to the approved design and materials for doors, windows, storm/screen doors and windows or gutters. Those standards are spelled out in the Cluster Handbook. The most current edition of the Cluster Handbook is also available on the cluster website: www.golfcourseview.org at the Handbook and Standards tab.

Definitions:

The word “**trim**” in the information below means all the wood on the exterior of your townhouse including the 5 ½” trim around your windows and doors, the fascias, soffits and rake boards, the wood bay on the Phoenix units, the bay window projections on the Augusta unit, and the trim boards on decks. The terms “**windows**” and “**doors**” mean the units themselves and not the 5 ½” trim surrounding them.

The Basics:

You can always repaint the exterior trim of your townhouse in the **existing** color(s) without applying for Reston Association Design Review Board (RA-DRB) approval. If you don't know the actual brand and color name of your existing paint, The chair of the cluster design standards committee or RA may be able to tell you what it is, or you can take a sample of it to Home Depot or Lowes and have them match the color in the brand of exterior paint you prefer.

- If you choose to keep the **existing** color(s), you must paint **all** of the exterior trim, windows, back door(s) and your gutters and downspouts the same color(s) as existing.
 - You can choose to paint your **front door** (but not the wood trim around the front door) a different complimentary color, and if this is a different color from the existing color, you will need RA-DRB approval for the front door color.
- If you wish to change the color(s) of your exterior trim, you must comply with the current cluster design standards and color palettes discussed below.

The Rules for Using the Current GCVCA Design Standards and Paint Palettes to Paint Your Exterior Trim

- You will need RA approval of your plans to change the paint color of your exterior trim. If the paint color(s) you select complies with the cluster design standards, your application will be approved at the staff level. If you request any exception to the cluster design standards, you'll need signatures from your nearest neighbors and an officer of the board, and your application will require DRB consultation or panel approval.
- The cluster color standards include 5 distinct palettes, each of which offers you the choice of 4 primary trim colors. Approved substitute colors are shown in parentheses. Each palette also includes 10 accent colors for your front door only. For simplicity the 5 paint palettes can be characterized as the:
 - Paint Palette I - Mushroom/Burgundy/Brown palette with primary trim colors of:
 - # 1 colors: Seahawk or Mushroom (Windham)
 - # 2 colors: Rosewood or Maroon Rust
 - Paint Palette II - Blue/Gray palette with primary trim colors of:
 - # 1 colors Dove Gray (Windham) or November
 - # 2 colors: Wedgwood (Half Tone) or Midsummer Gale
 - Paint Palette III - Gray-Green/Brown palette with primary trim colors of:
 - # 1 colors: Silver Birch or Pearl Tint
 - # 2 colors: Forest Night or Flint
 - Paint Palette IV - Green/Gray palette with primary trim colors of:
 - # 1 colors: Sage Green (Half Tone) or Pearl White
 - # 2 colors: Shaded Spruce or Robinhood Green
 - Paint Palette V - Off-White/Beige palette with primary trim colors of:
 - # 1 colors: Foam or Moselle
 - # 2 colors: Tenne or Pearl Tint
- Once you have chosen the palette you prefer:
 - You can choose to paint all of your exterior trim in a single trim color **or** in two of the primary trim colors.
 - If you choose to use a **single** color, you may use any one of the 4 primary trim (or approved

substitute) colors available in the palette you selected.

- If you choose to use **two trim colors**, you must choose one of the # 1 colors available and one of the # 2 colors available in the palette you selected.
 - If you choose to use **two trim colors, AND you have an Augusta, Doral or Pinehurst model**, you must use one of the colors (primary color) for **all** of the wood trim (including window and door trim, fascias, soffits and rake boards, trim boards of decks) and gutters and downspouts, and the other color for the windows and your back door(s). (See Example A below)
 - If you choose to use **two trim colors AND you have a Phoenix model**, you must use one color (primary color) for the windows, back doors, upper bay, fascias, soffits and rake boards, gutters, downspouts and trim on decks, and the other color for only the 5 1/2" trim around the windows and doors. (See Example B below)
- You can choose to paint your front door the to match the primary trim, or one of the accent colors available in the palette you selected.

Example A (Two color scheme - w. accent color door for Augusta, Doral and Pinehurst Models)



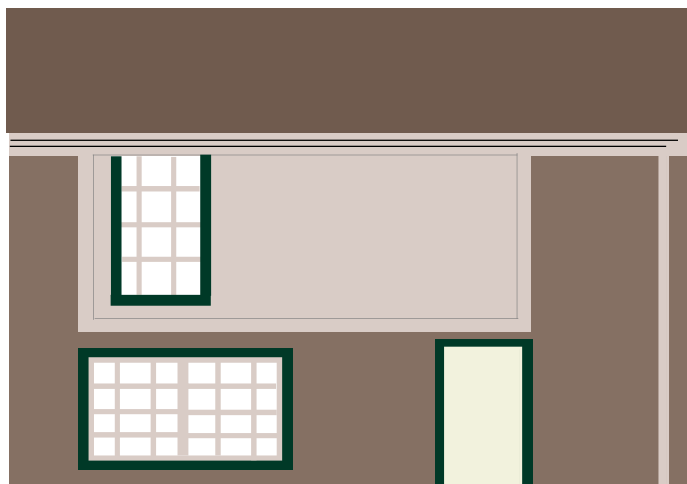
Notes:

On the Augusta model, the bay window projection must be the same color (primary) as the trim surrounding the windows and doors .

On all models, the trim board on upper level decks must be the primary color (blue in Example A).

On all models, the trash enclosure could be the primary color (blue in Example A) or could be left unpainted to weather naturally.

Example B (Two color scheme - w. accent color door for Phoenix Model)



Notes:

The trim board on upper level decks must be the primary color (tan in Example B).

The trash enclosure could be the primary color (tan in Example B) or could be left unpainted to weather naturally.

The Rules for the Color of Replacement Windows and Doors

- You will need RA-DRB approval of all replacement doors and windows that **are not identical** to the windows and doors you are replacing.
 - If you are replacing your **front door** and:
 - **are not repainting your trim**, you may choose to paint your door:
 - the same color as your primary trim,
 - any of the accent colors in the palette you selected for the trim.
 - if your trim is a color from a grandfathered palette, a complimentary color approved by RA-DRB.
 - **are planning to change the color of your trim**, your front door may be painted either:
 - to match the new primary trim color
 - the same color as your windows and back door(s), or
 - one of the accent colors available in the palette you selected for your trim.
 - If you are replacing your **windows or back door(s)** and the windows or back door(s) are **paintable**, you must follow the guidelines above for painting your **trim**.
 - If you are replacing your **windows or back door(s)** with **maintenance free, unpaintable** replacements, they may be either:
 - **medium or dark brown**
 - a color that closely matches or compliments the trim color surrounding them (becoming your second trim color), or
 - white or almond—in which case you must paint **all of the trim** on your house one of the following Pratt & Lambert colors:
 - Foam** (Palette V)
 - Tenne** (Palette V)
 - Pearl Tint** (Palettes III and V)
 - Mushroom** (Palette I)
 - Wyndham** (Palettes I and II)
 - Sea Hawk** (Palette I)
 - November** (Palette II)
 - Dove Gray** (Palette II)
 - Half-Tone** (Palettes II and IV)
 - Silver Birch** (Palette III)
 - Sage Green** (Palette IV)
 - Pearl White** (Palette IV)
 - Moselle** (Palette V)
- If your house is **currently** Martin Senour's **Bracken Tenement Bisque** or **Colonial Blue**, you may also install white or almond maintenance free, unpaintable windows.
- If you are replacing **both your windows and your back door(s)**, all of the replacement elements must be the **same color**.
 - If you are replacing only some of the windows or back door(s), you must paint the remaining windows and doors to match the replacement elements.

The Rules for the Color of Replacement Storm/Screen Windows and Storm/Screen Doors

- You will need RA-DRB approval of all replacement storm/screen doors and storm/screen windows that **are not identical** to the windows and doors you are replacing.
- If you are replacing your **front storm/screen door**, the replacement must:
 - match the color of the door it encloses, or
 - match the color of the trim that surrounds it, or
 - be medium to dark brown.
- If you are replacing **storm/screen windows or storm/screen back door(s)**, the replacements must:
 - match the color of the trim surrounding the windows or doors, or
 - be medium to dark brown, and
- All storm/screen windows and storm/screen back door(s) must be the same color.

The Rules for the Color of Gutters and Downspouts

- Gutters and downspouts must be the same color as the fascia board to which the gutters are attached. Gutters made of maintenance free materials may be used so long as they match, as closely as possible, fascia boards painted one of the primary trim colors in the cluster paint palettes.
- You will need RA-DRB approval of gutters that **are not identical** to the gutters being replaced.